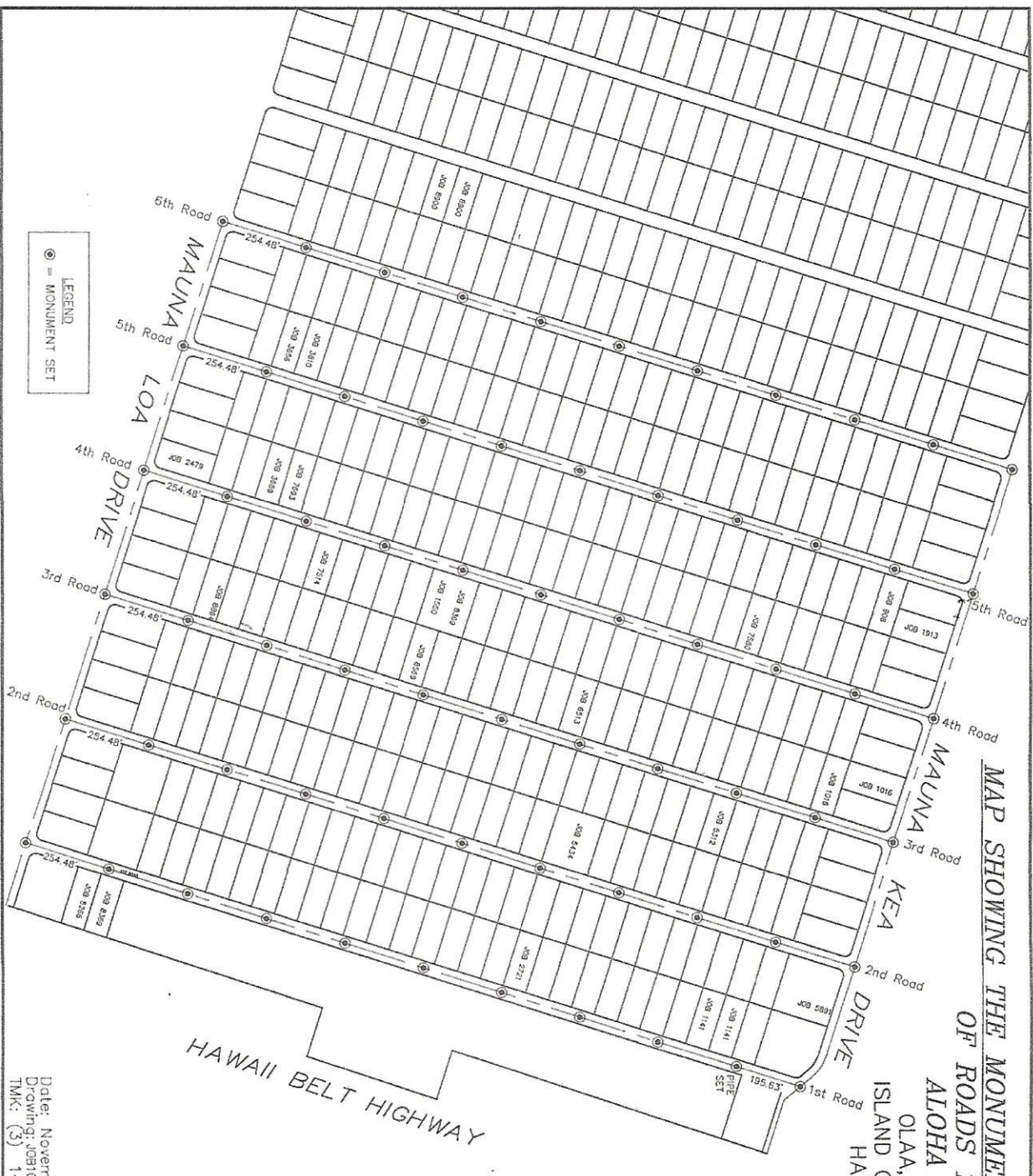
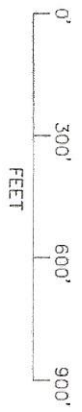


# MAP SHOWING THE MONUMENTATION OF THE CENTERLINES OF ROADS 1 THROUGH 6 ALOHA ESTATES OLAA, PUNA ISLAND OF HAWAII



**LEGEND**  
 = MONUMENT SET

TRUE NORTH  
 SCALE: 1 IN. = 300 FT.



- NOTES:**
1. The features shown hereon were located by an actual field survey completed on November 21, 2012.
  2. Monuments set on centerlines of Roads 1 through 6 are cotton gin spikes except as noted.
  3. Distances between monuments is 240.00 feet except as noted. RMS error in position of monuments is 0.02' or less.
  4. Lots labeled with Job Numbers were used to reference the centerline alignment of the six roads.
  5. Road right of way widths are as follows:
    - 1st Road: 40 ft.
    - 2nd Road: 40 ft.
    - 3rd Road: 40 ft.
    - 4th Road: 40 ft.
    - 5th Road: 40 ft.
    - 6th Road: 40 ft.
    - Mauna Loa Drive: 45 ft.
    - Mauna Kea Drive: 45 ft.

This work was prepared by me or under my direct supervision

Niels Christensen  
 Licensed Professional Land Surveyor  
 License Number 9077

Date: November 26, 2012  
 Drawing: J0810045.dwg  
 T.M.K.: (3) 1-8-57 THROUGH 63

**The Independent Hawaii Surveyors, LLC**

P.O. BOX 577  
 Hilo, HI 96721  
 Phone 808 959-0360  
 FAX 808 959-0353  
 info@theindependenthawaii.com